

WHOLE HOUSE RENOVATION

1. REMOVE ALL FLOOR COVERINGS AND REPLACE WITH NEW.
2. REMOVE ALL KITCHEN AND BATHROOM CABINETS AND REPLACE WITH NEW.
3. REMOVE ALL PLUMBING FIXTURES AND REPLACE WITH NEW.
4. REMOVE ALL LIGHT FIXTURES AND REPLACE WITH NEW.
5. UPDATE ELECTRICAL TO MEET CURRENT CODE REQUIREMENTS IN KITCHEN AND BATHROOM AREAS.
6. PATCH AND REPAIR ALL WALLS AND CEILINGS AND REPAINT THROUGHOUT.
7. REPLACE ALL WINDOWS WITH NEW INSULATED GLASS WINDOWS THROUGHOUT.
8. REPAIR AND REPLACE ALL DOORS AND HARDWARE.

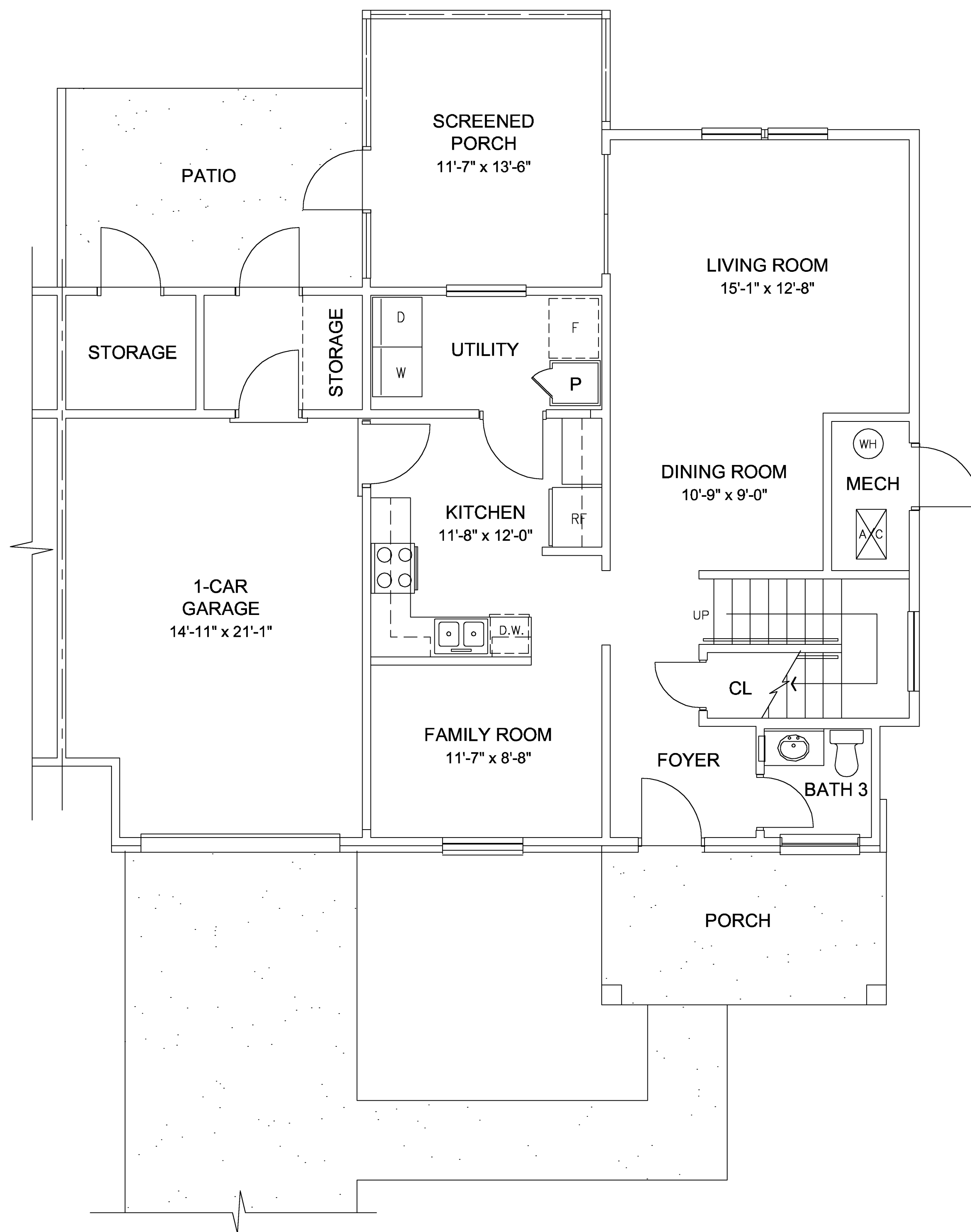
Unit Type RFP-2 JNCO
Tyndall AFB
2BR/JNCO

GROSS SF: 1,308
NET SF: 1,024

0 4' 8' 16' FEET



SCALE: 3/32"=1'-0"



FIRST FLOOR

WHOLE HOUSE RENOVATION

1. REMOVE ALL FLOOR COVERINGS AND REPLACE WITH NEW.
2. REMOVE ALL KITCHEN AND BATHROOM CABINETS AND REPLACE WITH NEW.
3. REMOVE ALL PLUMBING FIXTURES AND REPLACE WITH NEW.
4. REMOVE ALL LIGHT FIXTURES AND REPLACE WITH NEW.
5. UPDATE ELECTRICAL TO MEET CURRENT CODE REQUIREMENTS IN KITCHEN AND BATHROOM AREAS.
6. PATCH AND REPAIR ALL WALLS AND CEILINGS AND REPAINT THROUGHOUT.
7. REPLACE ALL WINDOWS WITH NEW INSULATED GLASS WINDOWS THROUGHOUT.
8. REPAIR AND REPLACE ALL DOORS AND HARDWARE.

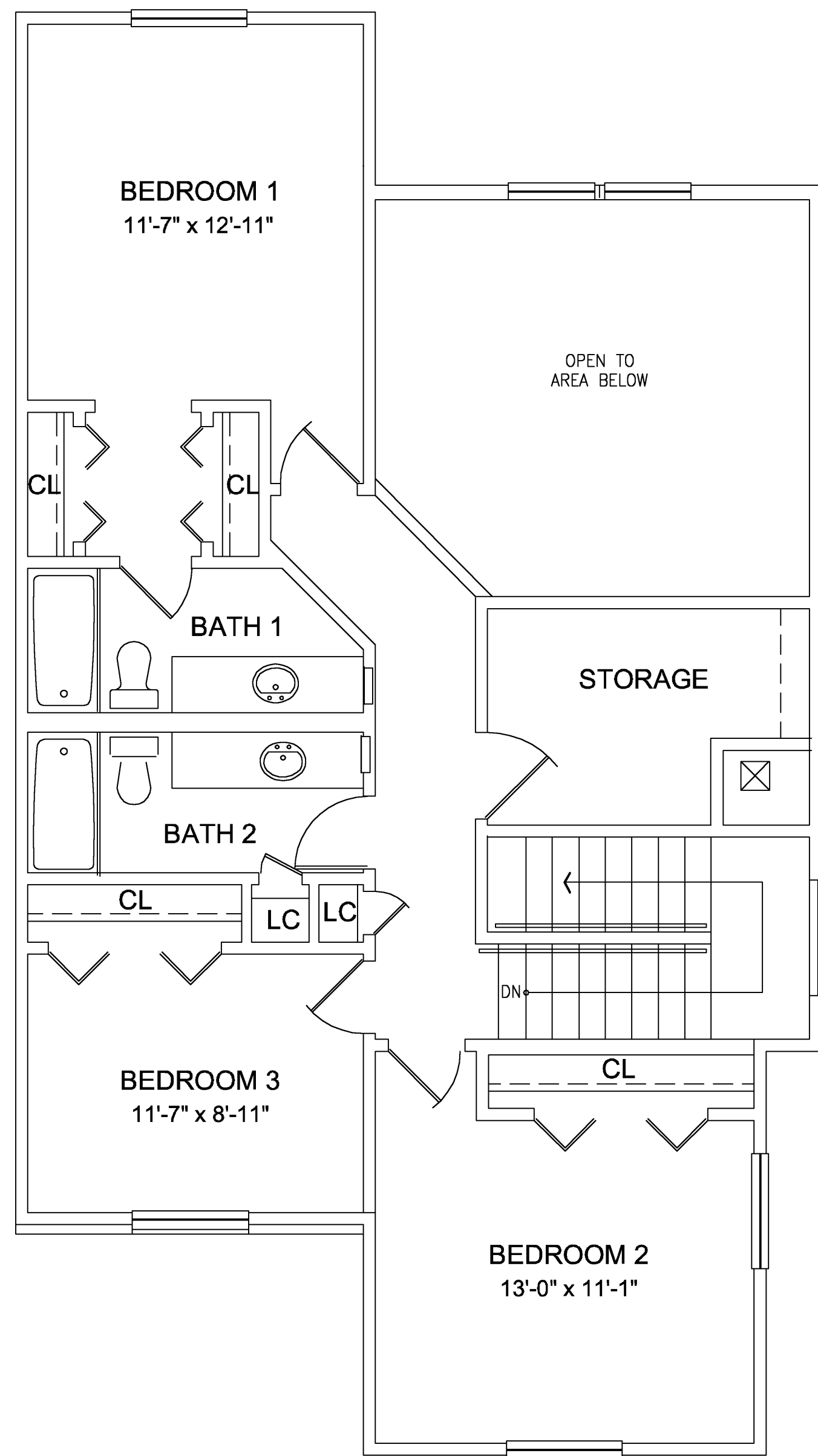
Unit Type RFP-3.1TH/SNCO
Tyndall AFB
3BR/SNCO

GROSS SF: 1,958
NET SF: 1,398

0 4' 8' 16' FEET



SCALE: 3/32"=1'-0"



SECOND FLOOR

WHOLE HOUSE RENOVATION

1. REMOVE ALL FLOOR COVERINGS AND REPLACE WITH NEW.
2. REMOVE ALL KITCHEN AND BATHROOM CABINETS AND REPLACE WITH NEW.
3. REMOVE ALL PLUMBING FIXTURES AND REPLACE WITH NEW.
4. REMOVE ALL LIGHT FIXTURES AND REPLACE WITH NEW.
5. UPDATE ELECTRICAL TO MEET CURRENT CODE REQUIREMENTS IN KITCHEN AND BATHROOM AREAS.
6. PATCH AND REPAIR ALL WALLS AND CEILINGS AND REPAINT THROUGHOUT.
7. REPLACE ALL WINDOWS WITH NEW INSULATED GLASS WINDOWS THROUGHOUT.
8. REPAIR AND REPLACE ALL DOORS AND HARDWARE.

Unit Type RFP-3.1TH/SNCO
 Tyndall AFB
 3BR/SNCO

GROSS SF: 1,958
 NET SF: 1,398

